

Customer :

customer

Customer part :

customer part

Comment :

Comment

S1=0.01

S2=0.02

Tmax=418

Tp S2=457.0

PI=0.3

HI=40

Sample =3210.4

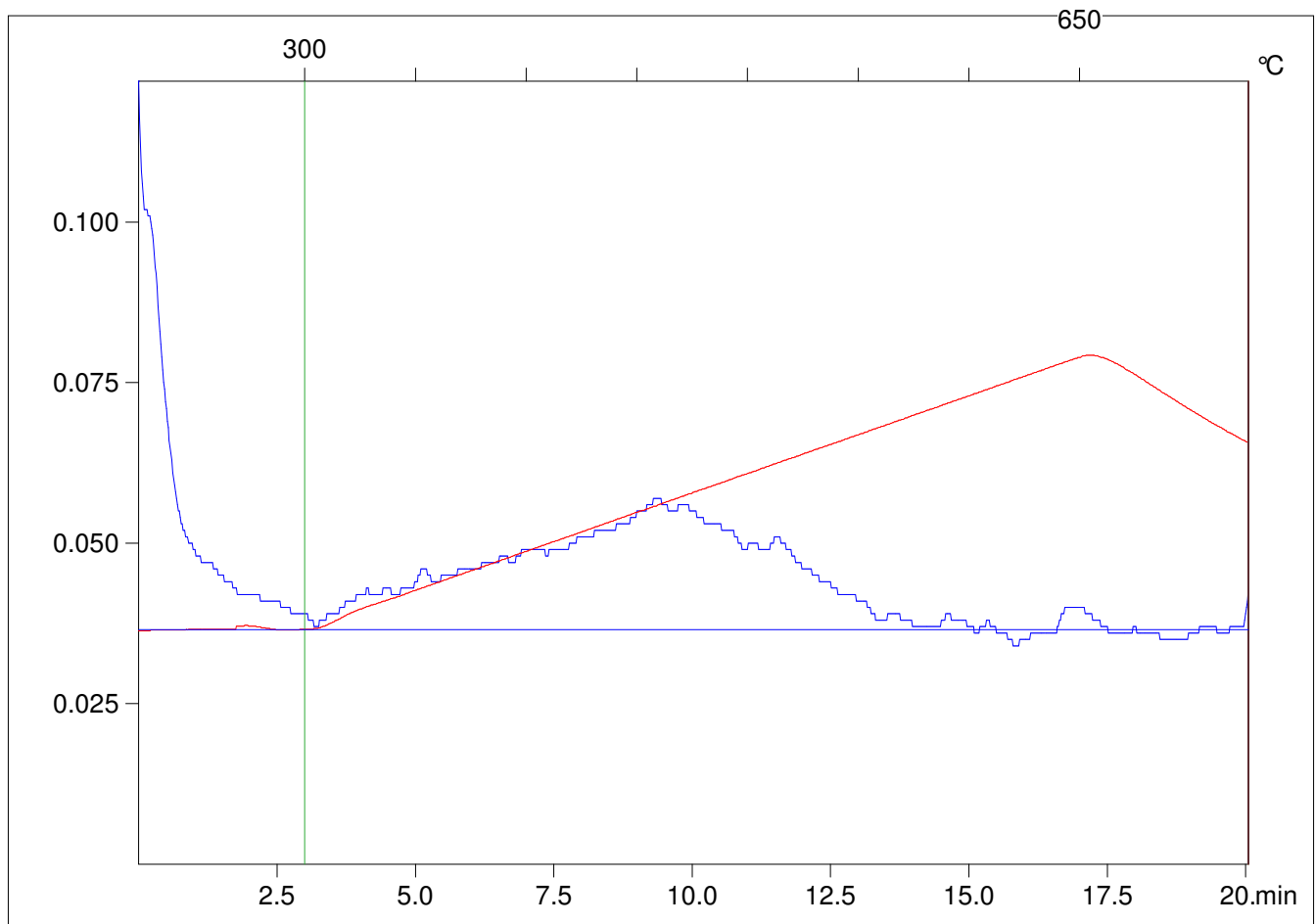
Method =Bulk Rock

Cycle=Basic

KFID(10*9)=1550

Qty =50.9

TOC=0.05



C:\VINC\PK130315\PK044.R00 : FID pyrolysis graphic

State

Pyro Status

Oxi Status